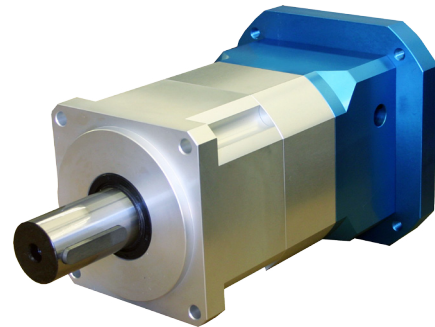


# GBPH-180x-NP Series



FEATURES

- **Backlash as Low as 5 arc-min**
- **Gear Ratios From 3 to 100**
- **Available in 1 and 2 Stage Models**
- **Patented Precision Clamping System**
- **Lifetime Lubrication**
- **High Durability**
- **Operating Temperature of -15° to 90°C**



DESCRIPTION

The GBPH-180-NP Series Planetary Gearbox offers you the precision you need at the prices you want! This Planetary Gearbox is designed with very low backlash for motion control, automation, and robotic applications requiring precise position requirements. This Planetary Gearbox will match many servos or steppers and is ideal for 170-200mm length motors. Designed with the goal of offering a cost-effective product without sacrificing quality, you will find that this Planetary Gearbox offers you an extraordinary value. Please verify all dimensions when matching a gearbox to a specific motor, as critical dimensions will vary among series and manufacturers.

SPECIFICATIONS

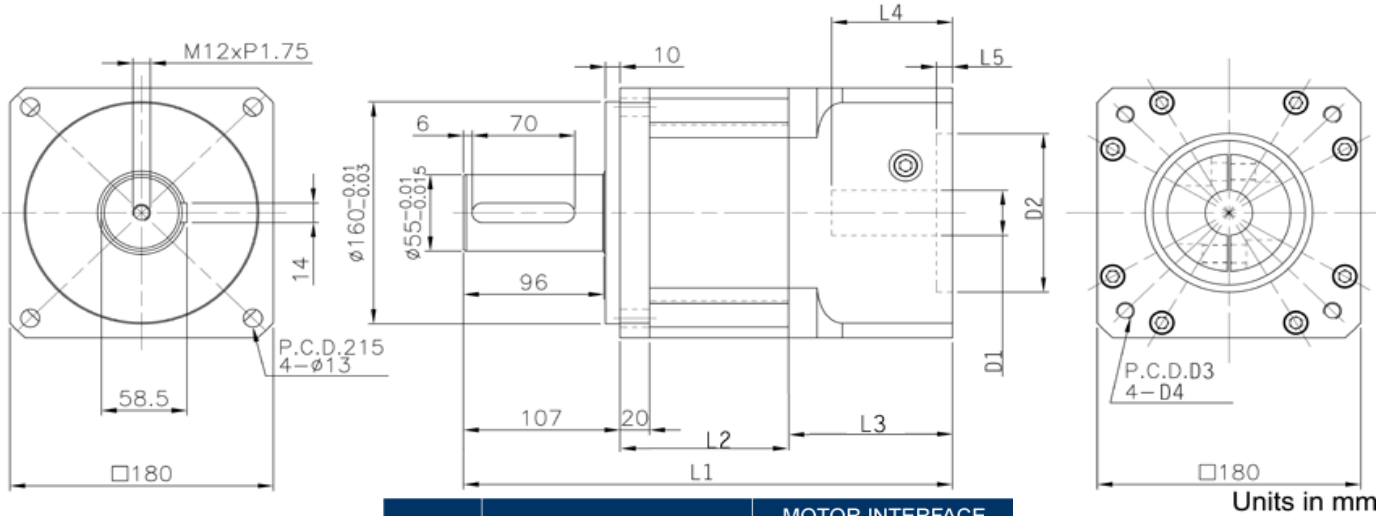
Model #	Gear Ratio (X:1)	Rated Output Torque (in-lb)	Max Output Torque (in-lb)	Rated Input Speed (RPM)	Stages	Backlash Maximum (arcmin)	L2 Length (mm)	Weight (lbs)
GBPH-1801-NP-003-xxxx-yyy	3	8736	26208	3000	1	5	90	84.0
GBPH-1801-NP-004-xxxx-yyy	4	11329	33988	3000	1	5	90	84.0
GBPH-1801-NP-005-xxxx-yyy	5	11046	33138	3000	1	5	90	84.0
GBPH-1801-NP-007-xxxx-yyy	7	10488	31485	3000	1	5	90	84.0
GBPH-1801-NP-010-xxxx-yyy	10	8736	26208	3000	1	5	90	84.0
GBPH-1802-NP-009-xxxx-yyy	9	8736	26208	3000	2	10	172	110.0
GBPH-1802-NP-012-xxxx-yyy	12	8736	26208	3000	2	10	172	110.0
GBPH-1802-NP-015-xxxx-yyy	15	11329	33988	3000	2	10	172	110.0
GBPH-1802-NP-016-xxxx-yyy	16	11329	33988	3000	2	10	172	110.0
GBPH-1802-NP-020-xxxx-yyy	20	11329	33988	3000	2	10	172	110.0
GBPH-1802-NP-021-xxxx-yyy	21	10488	26208	3000	2	10	172	110.0
GBPH-1802-NP-025-xxxx-yyy	25	11329	33988	3000	2	10	172	110.0
GBPH-1802-NP-028-xxxx-yyy	28	11329	31456	3000	2	10	172	110.0
GBPH-1802-NP-030-xxxx-yyy	30	8736	26208	3000	2	10	172	110.0
GBPH-1802-NP-035-xxxx-yyy	35	10488	31456	3000	2	10	172	110.0
GBPH-1802-NP-040-xxxx-yyy	40	11329	33988	3000	2	10	172	110.0
GBPH-1802-NP-049-xxxx-yyy	49	10487	31462	3000	2	10	172	110.0
GBPH-1802-NP-050-xxxx-yyy	50	11046	33138	3000	2	10	172	110.0
GBPH-1802-NP-070-xxxx-yyy	70	10488	31456	3000	2	10	172	110.0
GBPH-1802-NP-100-xxxx-yyy	100	10488	31456	3000	2	10	172	110.0

**Part numbers are based on the specifications of the motor being matched to the gearbox.**

-xxxxx denotes motor pilot, -yyy denotes input shaft diameter.

Refer to *Matching the Gearbox to Your Motor* on the second page for more information, or contact an Anaheim Automation Applications Engineer for assistance.

L010487



ITEM	DESCRIPTION	MOTOR INTERFACE
		EM180-1378
D1	Input Shaft Diameter	35
L4	Max Shaft Length	82.5
L3	Motor Mount Length	110
D2	Pilot Diameter	114.4
L5	Pilot Depth	11
D3	Mounting Bolt Hole Circle	200
D4	Bolt Hole Size	M12

Radial Load:	3147 lbs - Force	Axial Load:	4496 lbs - Force
Operating Temperature:	-15° to 90°C	Noise Level:	64 dB
Efficiency:	3~10: ≥ 97; 12~100: ≥ 94	IP Rating:	IP65

### Matching the Gearbox to Your Motor

To ensure compatibility with the gearbox, it is important to consider that the motor specifications are within the listed ranges below. Bolt Circle Diameter, Input Shaft Diameter, Input Shaft Length, Pilot Thickness, Pilot Diameter and Hole Diameter are required in order to match the motor with the appropriate gearbox, and will be used to determine the complete part number. Please see the Gearbox Mounting form downloadable from our website under *Support - Technical Support - Installations* for more information on required motor data.

Parameter	Range
Bolt Hole Circle Diameter	115mm to 145mm
Input Shaft Diameter	48mm to 55mm
Input Shaft Length	95mm Max
Pilot Thickness	10mm Max
Pilot Diameter	95mm to 155mm
Hole Diameter	Any Size